



FIRE FIGHTER'S SAFETY GUIDE 2017



What is an apparatus?

Fire and Life Safety Activities

Test Your Fire Safety Knowledge



EVERY SECOND COUNTS: PLAN TWO WAYS OUT!

MESSAGE FROM THE HAWAII STATE FIRE COUNCIL (SFC)

Aloha! The SFC, which is comprised of the four county Fire Chiefs, is pleased to announce the 32nd edition of the Fire Fighter's Safety Guide (FFSG).

This year's FFSG promotes the National Fire Protection Association's (NFPA) 2017 FPW theme, "Every Second Counts: Plan Two Ways Out."

According to the NFPA, it is important for families to have a fire escape plan and at least two ways out of every room in their home. To do this, draw a map of your home with all members of your household, marking two exits from each room and a path to the outside from each exit. The NFPA emphasizes the need to continue planning and practicing home fire drills twice a year. Conduct one at night and one during the day with everyone in your home, and practice using different ways out. Teach your children how to escape on their own in case you can't help them. Make sure the number of your home is clearly marked and easy for the fire department to find. Close the doors behind you as you leave, as this may slow the spread of smoke, heat, and fire. Once you are out, stay out! Never go back into a burning building.

The FFSG is distributed to elementary school students statewide through a collaboration of Hawaii's four county fire departments. This effort is unique to Hawaii and contributes toward our state having among the lowest rates of fire deaths and injuries in the nation.

The FFSG was designed with the entire family in mind. Please complete the activities and lessons with your child. This will help prepare for emergencies through prevention and planning. The completed activities should be returned to your child's teacher.

Mahalo for your participation.



ROBERT F. WESTERMAN
Vice Chair
Kauai Fire Department
Fire Chief

MANUEL P. NEVES
Chair
Honolulu Fire
Department
Fire Chief

DARREN J. ROSARIO
Member
Hawaii Fire Department
Fire Chief

JEFFREY A. MURRAY
Member
Department of Fire
and Public Safety
County of Maui
Fire Chief



EVERY SECOND COUNTS

PLAN **2** WAYS OUT!™



FIRE PREVENTION WEEK

OCTOBER 8-14, 2017

firepreventionweek.org

Aloha Junior Fire Fighter,

As Hawaii's fire fighter safety mascot, I invite you to join me in sharing the fire prevention and safety messages from this year's FFSG with your family and friends.

I urge you and your family to review and practice your family fire escape plan twice a year and incorporate your smoke alarm test into an evacuation drill. It is a great way to spend time with your loved ones while practicing two very important fire safety lessons.

Did you know that fire departments have a variety of apparatuses they use to respond to different emergencies? A fire apparatus is any type of vehicle used by fire fighters. There are different types of trucks, specialty vehicles, helicopters, and watercrafts. Learn about the different types of apparatuses that are highlighted throughout this guide.

Remember to practice fire safety every day!

– Poki –



AN AUXILIARY VEHICLE

may serve as command posts for large emergencies or as a support vehicle to transport equipment and supplies.



IN THIS ISSUE

- 2** Message from the Hawaii SFC
- 3** Message from Poki
- 4** Smoke Alarms and Fire Sprinklers
- 6** Plan Your Escape
- 7** Fire Extinguishers
- 8** Spot 10 Differences
- 9** Responding to an Emergency
- 10** Kitchen Hazards
- 11** Rules of the Road
- 12** Hiking and Ocean Safety
- 13** Wildland Fire Preparedness
- 14** Word Search
- 15** Don't Stall, Call 911
- 16** Junior Fire Fighter Pledge

Smoke Alarms

Smoke alarms are essential in every home to detect a fire.

BOTH SAVE LIVES



Smoke spreads fast and working smoke alarms allow you time to escape if there is a fire in your home. If you hear a smoke alarm, get out and stay out using your home escape plan.

Your home should have smoke alarms in every bedroom, outside each separate sleeping area, and on every level of your home, including the basement.

If you hear a single beep or a chirping sound from a smoke alarm, tell your parents. That sound means that the battery must be changed.

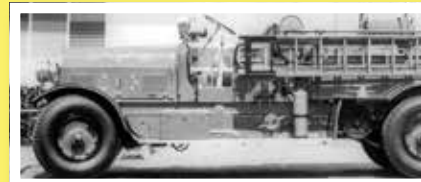
Test your smoke alarm every month.

HFD Apparatus T I M E L I N E

1912 First Motorized Seagrave Apparatus



1924 Seagrave Pumper



1850 1860 1870 1880 1890 1900 1910 1920 1930



1853 Hand-drawn Wagon



1893 Horse and Wagon Steamer



1915 Seagrave Model K Tractor

and Fire Sprinklers

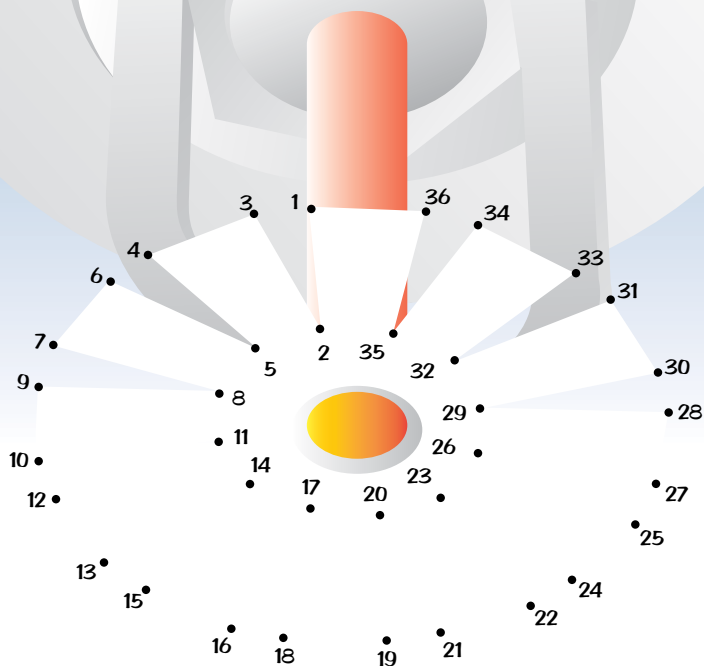
Residential fire sprinklers detect heat and control the fire.

AND PROPERTY.



ACTIVITY

Connect the Dots



Answers found at www.honolulu.gov/hfd/ffsg

A fire sprinkler's job is to extinguish and suppress the fire before fire fighters arrive, minimizing the damage.

Fire sprinklers are the first line of defense against fires!

It is like having a fire fighter in your home 24/7.

Fire sprinklers activate independently; only the fire sprinkler closest to the fire will activate.

1961 Crown Engine



1992 Seagrave Engine



2015 KME Engine



1940

1950

1960

1970

1980

1990

2000

2010



1950 Seagrave Engine



1969 American La France



2000 Pierce Engine

Every Second Counts:

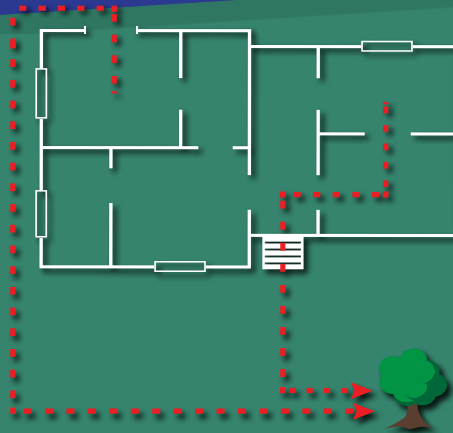
Plan Two Ways Out!

STAY LOW AND GO

If you see or smell smoke or hear a smoke alarm, STAY LOW AND GO!! When you stay low to the ground and crawl, you can see and breathe better.

ACTIVITY PLAN YOUR ESCAPE

Practice your escape plan at least twice a year by having a family fire drill. You can even have a drill at night so you know how to get out safely in the dark.



GET OUT, STAY OUT!

Once outside, do NOT go back in for anything.

Use the grid below to draw a map of your home showing all doors and windows. Use arrows to show your escape routes. Show at least two ways out of every room. Include an outside meeting place (like a tree, light pole, or mailbox) a safe distance from your home where everyone can meet.

Mark all of the smoke alarms with a circle. Smoke alarms should be in every bedroom, outside each sleeping area, and on every level of your home.

A large, empty grid of 20 columns and 20 rows, intended for drawing a map of a home and showing escape routes.

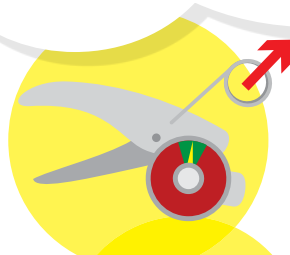
ENGINE The fire engine is the most common apparatus in the fire department. The engine is sometimes called a pumper because it pumps water from its water tank or a fire hydrant.

FIRE EXTINGUISHERS



Every home should have at least one fire extinguisher for an adult to use. Keep the fire extinguisher where it can be seen and reached easily.

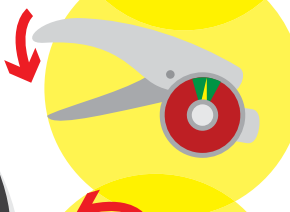
To use a fire extinguisher, remember **P-A-S-S**.



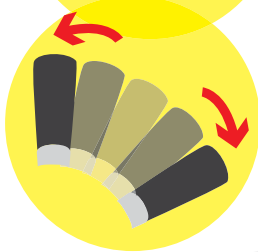
Pull the pin.



Aim at the base of the fire.



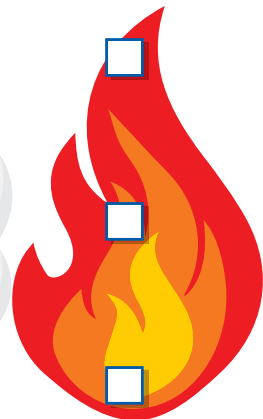
Squeeze the handles on top.



Sweep the nozzle slowly from side to side until the flames are extinguished.

ACTIVITY

Mark the box that shows the best place to aim your fire extinguisher.



Answers found at www.honolulu.gov/hfd/ffsg

TANKER The tanker delivers water to an emergency and carries approximately 2,000 gallons of water. A tanker is important when there are no fire hydrants nearby.



ACTIVITY

Spot 10 Differences



Answers found at www.honolulu.gov/hfd/ffsg

HAZMAT The hazardous materials (hazmat) apparatus is equipped for chemical, biological, radiological, nuclear, and explosive-related incidents. Response teams are trained extensively in the technical knowledge and skills required for these delicate missions. Sometimes the fire fighters have to wear chemical-proof, air-tight protective gear.



Responding to an Emergency

ACTIVITY

Match the Apparatus to the Emergency



Tower



Helicopter



Boat



Engine

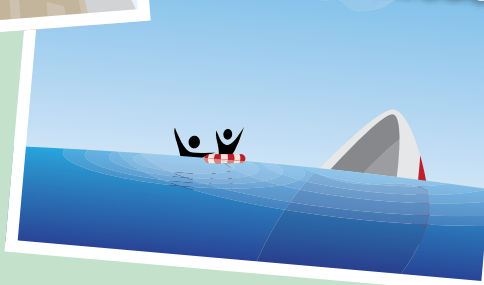
• highrise building fire



• house fire



• ocean rescue



• brush fire



Answers found at
www.honolulu.gov/hfd/ffsg

LADDER The main characteristic of a ladder apparatus is the turntable-mounted aerial ladder. This ladder can reach up to 100 feet. A tillerman is the driver that steers the rear wheels at the end of the ladder apparatus. An operator can move the ladder up and down or from left to right.



ACTIVITY

Find and Color 5 Kitchen Hazards



Answers found at www.honolulu.gov/hfd/ffsg



TOWER The tower apparatus has an elevated platform attached to the top of the ladder. Fire fighters can operate the placement of the platform from the top of the platform.

Rules of the Road

Reduce your speed.

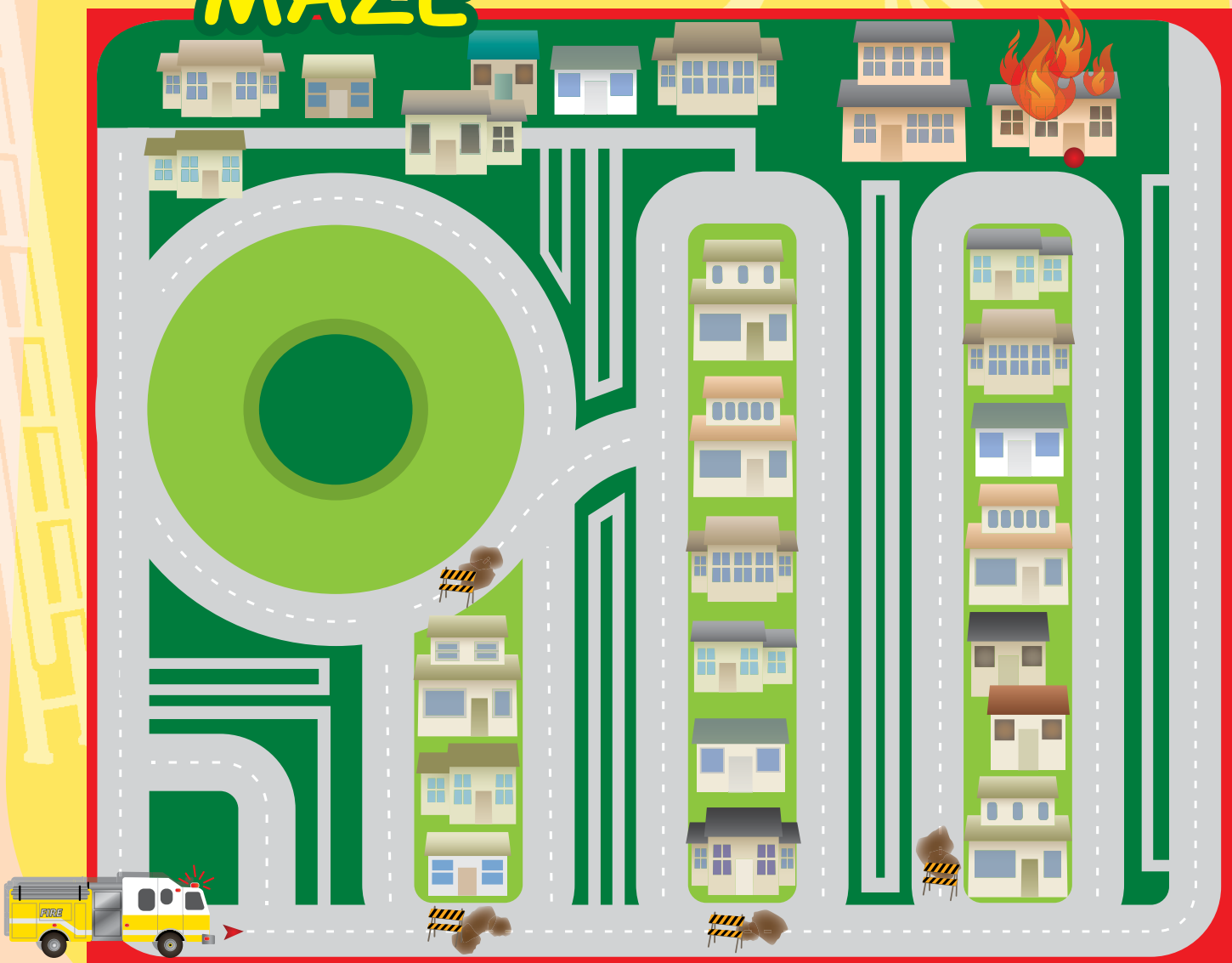
Determine where the emergency vehicle is coming from.

Move your vehicle out of the path of the emergency vehicle, toward the edge of the road and stop.

If the emergency vehicle is directly behind your vehicle when you are in heavy traffic, keep moving slowly until you can get out of the way.

ACTIVITY

MAZE



Answers found at www.honolulu.gov/hfd/ffsg

QUINT Quint is short for quintuple combination pumper because these apparatuses have five functions. A quint provides a pump, a water tank, a fire hose, an aerial device, and ground ladders. This apparatus is an engine and ladder truck combined.



Hiking

Have
a plan.

Inform
someone of where
you are going and
when you plan to
return.

Keept
a flashlight and
a whistle with
you.

Eat well,
stay hydrated;
carry plenty of
water.

Stay on
the trail.

Ask for
help.

Familiarize
yourself with the
area; use a
map.

Expect
changes in the
weather.

Ocean

Stay
away from
dangerous
coastlines.

Always
be aware of your
surroundings. Never
turn your back to
the ocean.

Follow
hazard warning
signs and lifeguard
instructions for
your safety.

Everyone
should use
sunblock and stay
hydrated.

SEARCH AND RESCUE + BOAT The search and rescue apparatus may be seen towing its rescue boat. The team is trained to use specialized

equipment to rescue people in difficult places like mountain, high-angle, or confined space rescues and vehicle accidents. The rescue boat is used for ocean rescues and marine vessel fires. Some fire stations also have personal watercrafts with a rescue sled to assist with near-shore rescues.





Wildland Fire Preparedness

Create at least a 30-foot safety zone around the house by removing brush and other vegetation.

Safely store flammable material away from the exterior of your home. If it can catch fire, don't let it touch your house.

Wildland fire can spread to tree tops. Prune trees so the lowest branches are 6 to 10 feet from the ground.

Keep fire lanes and access points unobstructed to ensure fire apparatuses can reach your home.

Make and practice a family evacuation plan.

Report suspicious activity you may have seen before, during, or after a fire.



HELICOPTER The helicopter is dispatched to provide air support for rescue missions and wildland fires. To rescue people from mountainous terrain or the ocean, the crew may lower rescue personnel from the helicopter. They respond to emergencies from the mountain to the sea, up to three miles offshore. For wildland fires in mountainous areas, a light-weight, collapsible container is attached for water drops.

ACTIVITY

Word Search

Find some of the tools and equipment on apparatuses.
Be sure to check left, right, up, and down.

AXES**NOZZLES****HOSES****TOOLBOX****EXTINGUISHER****LADDERS****RADIOS****MAP****SIREN****LIGHTS**

B	X	E	I	T	X	E	K	Q	M	A	N	Q
W	D	G	Q	Z	W	X	V	L	G	D	O	E
P	M	A	P	O	K	T	G	J	U	P	Z	K
O	A	X	E	S	V	I	K	W	H	O	Z	F
K	P	X	A	M	E	N	T	M	I	R	L	N
I	R	V	N	F	W	G	F	S	I	R	E	N
L	I	G	H	T	S	U	U	R	N	T	S	F
O	A	M	E	T	U	I	D	P	W	U	G	H
C	R	A	D	I	O	S	R	H	O	S	E	S
T	S	P	R	I	N	H	L	E	R	C	Q	K
B	W	F	Q	J	H	E	E	Q	O	R	I	V
K	L	A	D	D	E	R	S	J	G	F	M	P
F	M	R	N	D	R	E	O	X	E	M	O	I
U	W	T	O	O	L	B	O	X	N	T	K	Y

Answers found at www.honolulu.gov/hfd/ffsg

DON'T STALL, CALL 911!

When there is an emergency, **don't stall, call 911**, and give the operator your information. If there is a fire in your house, **DO NOT** call from your home. **Get out and stay out!** Go to your family's safe meeting place.

★ **WHO**

Give the operator your **first** and **last name**.

★ **WHAT**

Explain what is wrong and what **type of help** you need.

★ **WHERE**

Know your **full address** or **location**.

Don't hang up until the operator says you can.

ACTIVITY

Write your address

Write down your emergency information and put it somewhere easy to find like on the refrigerator. Practice remembering important information like your full name and home address.

Practice your home escape plan ☒ during the day and ☒ at night.





Junior Fire Fighter Pledge

I, _____ (print name),
will be a responsible Junior Fire Fighter and practice what I learned in this
Fire Fighter's Safety Guide with my family.

Junior Fire Fighter's Signature

Parent Checklist ✓

- ☐ I reviewed this Fire Fighter's Safety Guide with my child
by going to www.honolulu.gov/hfd/ffsg.
- ☐ We completed all activities in the guide as a family.
- ☐ I completed the online survey at
<https://surveymonkey.com/r/hawaiifiresafety>

Parent Signature



Mahalo to our partners!

Bay View Mini-Putt and
Zipline

Big City Diner

Bishop Museum

Cafe 100

Dole Plantation

Honolulu Zoo (Department
of Enterprise Services)

Jack In the Box®

Jamba Juice

Kauai Kookie

Krispy Krème

Maui Ocean Center

McDonald's® Restaurants
of Hawaii

Menhune Water Co.

Pizza Hut®, TD Food
Group Inc.

7-Eleven® Hawaii Inc.

Taco Bell

Waikiki Aquarium

Waikiki Beach Marriott
Resort & Spa